

LINCOLNSHIRE POLICE



NEIGHBOURHOOD POLICING COMMITMENT 2023



WORKING TOGETHER TO MAKE LINCOLNSHIRE THE SAFEST PLACE TO LIVE, WORK AND VISIT

CONTENTS

FOREWORD	1	ENGAGEMENT	8
OUR VISION	2	PREVENTION AND PROBLEM SOLVING	9
OUR STRATEGY	3	TARGETING	10
Stop Crime and ASB	3	HELP THOSE IN NEED - WORKING WITH PARTNERS	11
Protect People from Harm	3	Anti-Social Behaviour	11
Help those in Need	3	Safeguarding	11
HOW WE WILL DELIVER THIS	4	School Engagement	12
We will engage	4	Volunteering	13
We will listen	4	Violence Against Women and Girls (VAWG)	14
We will inform	4		
We will work together	4		
NEIGHBOURHOOD POLICING STRATEGY	5		
NEIGHBOURHOOD POLICING PORTFOLIO	6		
WORKING WITH THE PUBLIC	7		
Our Teams	7		

FOREWORD

Working together to ensure Lincolnshire is one of the safest places in the country to live, work and visit.

Geographically Lincolnshire is the second largest county covering an area of 5,868 square kilometres, with over 8,800 kilometers of maintained roads. It borders Humberside to the north, the North Sea to the east, Norfolk, Cambridgeshire, Northamptonshire and Rutland to the south, and Leicestershire, Nottinghamshire and South Yorkshire to the west.

The county is hugely diverse with rolling countryside and historic market towns and villages, to an award winning coastline as well as Britain's best small city, Lincolnshire is one of the safest places in the country to live, work and visit.

From the Cathedral City of Lincoln, with its own university which has been ranked in the top 50 universities in the UK and the home of the first ever British tank, to the seaside town of Skegness, the home of the 'Jolly Fisherman' which alone sees 2.3 million visitors a year, from the historic town of Boston famed for the original settlement of the Pilgrim Fathers or villages such as Old Bolingbroke where the very first Norman Castle was built in England,

which was also the birthplace of King Henry IV, to the home of the 617 Squadron 'Dambusters' earning it the nickname Bomber County, the Battle of Britain Memorial Flight, and the Red Arrows, Lincolnshire has much to offer residents as well as a wide range of visitors throughout the year.

Lincolnshire Police work extremely hard to ensure that the county remains one of the safest places putting neighbourhood policing at the heart of all it does. Every area of Lincolnshire is covered by its own dedicated Neighbourhood Policing Team, which is led by an Inspector, and which has dedicated Police Sergeants and Constables, known as Community Beat Managers delivering neighbourhood policing. We have supplemented these teams with Police Community Support Officers (PCSOs) dedicating additional staff in the most vulnerable areas of the county, ensuring we deliver visibility and to tackle local issues that impact our communities the most.

None of our Neighbourhood Policing Teams works in isolation, every area is and will

continue to be supported by police officers from Response, the Roads Policing Unit, Rural Crime Action Team, and investigation teams. These are all areas where we have invested additional police resources in the past months and who are all tackling issues that most affect people who live in Lincolnshire. In addition to these uniformed services we can also call upon a large number of non-uniformed departments such as CID, intelligence services, abuse investigation teams and victim services.

With 15% less crime per 1000 of population, despite being 33% below the national average in terms of officer numbers. Lincolnshire remains one of the safest places in the country to live, work and visit, and Lincolnshire Police working together with partners are committed to keeping it this way.

Chief Superintendent
Kate Anderson
Head of Local Policing

OUR VISION

Working together to make the county the safest place to live, work and visit.



OUR STRATEGY

In line with the force priorities there are three areas that underpin our neighbourhood policing commitment 2023.



STOP CRIME AND ASB

We will do our utmost to prevent harm before it happens and lessen the impact when it does.



PROTECT PEOPLE FROM HARM

We will work with the community to deliver a series of initiatives to make them feel safe and protect them from harm.



HELP THOSE IN NEED

We will work with our partners to identify the most vulnerable in our community, offering a high standard of care. Ensuring we have the right resources in the right place at the right time.

HOW WE WILL DELIVER THIS

WE WILL ENGAGE



We will be in the right place at the right time, in the heart of our communities.

WE WILL LISTEN



We will listen to the views of all our communities, setting community priorities across the county in consultation with you dealing with the things that really matter in your area.

WE WILL INFORM



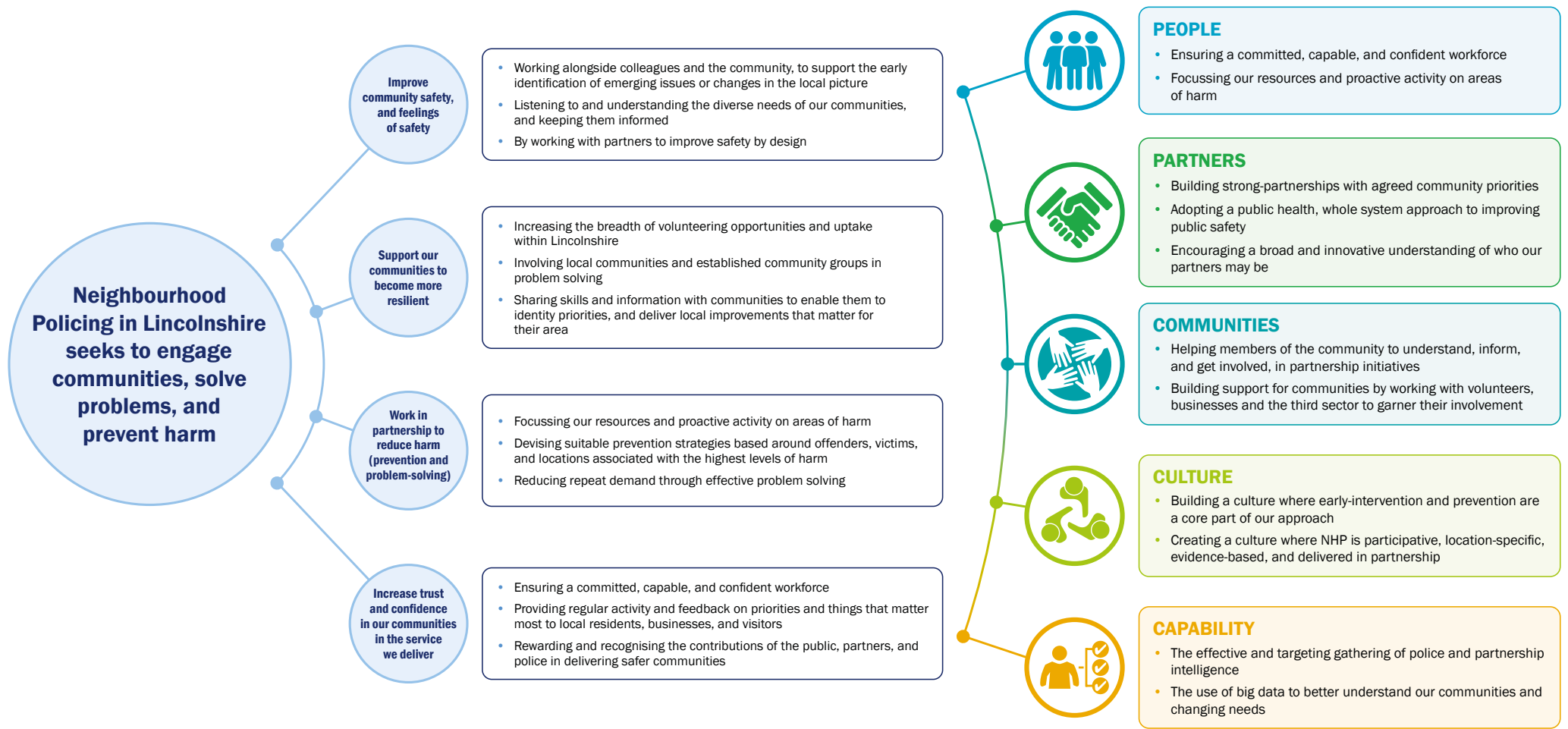
We will communicate using face-to-face engagements and across a number of online platforms.

WE WILL WORK TOGETHER



We will seek out opportunities to work with our partners and offer community participation policing initiatives.

NEIGHBOURHOOD POLICING STRATEGY



NEIGHBOURHOOD POLICING PORTFOLIO



Improve community safety, and feelings of safety

- Improving feedback loop with the public (use of Street Safe, Qlik hotspots, Office of Policing Crime Commissioner Data) into Neighbourhood Policing (Teams) tasking
- Proactive engagement strategies with hard to reach communities
- Identify and use opportunities for increased face to face engagement
- Work with partners to improve safety by design
- Reduce crime and ASB



Support our communities to become more resilient

- Improve working link between Neighbourhood Policing Teams, Police support volunteers, and Lincolnshire Community and Voluntary Service
- Provide formal support to existing community groups (Pub Watch, Caravan Watch etc)
- Formal reward and recognition for local community champions
- Support with identifying and supporting community groups with funding bids and access to information



Work in partnership to reduce harm (prevention and problem-solving)

- Review of Problem Solving Hub
- Embed prevention activities across all areas of policing, including non-Neighbourhood Policing Team resources
- Strengthen relationships between Community Safety Partnership and Safer Lincolnshire Partnership
- Increased joint enforcement opportunities



Increase trust and confidence in our communities in the service we deliver

- Community engagement strategy co-designed with Comms Team
- Regular continued professional development events and yearly conference
- Embedding shadowing and inter-agency mentoring
- You said, we did

Our Approach Will Be

Location specific, by:

- The effective and targeting gathering of police and partnership intelligence
- Speaking to local residents and community representatives including councillors, involving them in solutions, and providing them with updates
- The use of big data to better understand our communities and changing needs

Partnership delivered, by:

- Building strong-partnerships with agreed community priorities
- Adopting a public health, whole system approach to improving public safety
- Encouraging a broad and innovative understanding of who our partners may be


Evidence-based, by:

- Understanding what works by bringing together the best national practice from inside and outside policing, identifying existing academic research, and procuring further research to improve service delivery
- Ensuring that our performance framework is linked to evidence-based practice.
- Working regionally and nationally to share best practice, and inform UK-wide developments
- Endorsing a continuous improvement methodology within our NHP teams

Participative, by:

- Building community resilience to tackle specific issues, and to build a self-sustaining model for the future
- Helping members of the community to understand, inform, and get involved, in partnership initiatives
- Building support for communities by working with volunteers, businesses and the third sector to garner their involvement

WORKING WITH THE PUBLIC




We will do our utmost to prevent harm before it happens and lessen the impact when it does.

We will create an annual Neighbourhood Plan for each area. The plans will provide a full picture of what is happening in the area you live, work or visit to inform you what is going on within your communities. This data will include crime and ASB data, as well as information provided by the Office of the Police and Crime Commissioner, and the Safer Together Team. We can then together set Community Priorities that will make a real difference. We will use social media, our website, our Key Individuals Networks (KINs), quarterly newsletters, feedback from StreetSafe and NextDoor (nextdoor.co.uk) as well as face to face meetings to inform you how we have addressed these and other priorities.



OUR TEAMS

To deliver the best possible service we have beat managers, sergeants and inspectors dedicated to every area, and in the most vulnerable areas in the county we have teams of dedicated PCSOs to support our engagements and provide additional visibility where it most matters. Over the last 18 months we have further invested in an additional 13 community beat managers.



We will use the StreetSafe reports generated by you, to target patrols and work with partners to improve areas you feel unsafe in.

StreetSafe

www.police.uk/pu/notices/streetsafe/street-safe/

ENGAGEMENT

We will be informative, have two way conversations, and be active in our communities, including with partner organisations. We will reach out and engage with seldom heard communities, utilising our Equality, Diversity and Inclusion teams, and Independent Advisory Groups to full advantage.

WHY DOES THIS MATTER?

Engagement is a core element of police activity, informing and having an impact on every area of policing. A genuine commitment from leadership plays an important role in ensuring that public engagement is effective.

We will engage to ensure:

- An increase in public perceptions of safety
- A reduction in disorder and anti-social behaviour
- An increase in confidence and trust, and in community perceptions of the police
- An improvement in police officers' attitudes and job satisfaction
- A positive impact on the ability of the police to tackle crime and anti-social behaviour



PREVENTION AND PROBLEM SOLVING

We will use structured problem-solving techniques to address local priorities and to prevent crime and anti-social behaviour, working collaboratively with communities and partners.



LINCOLNSHIRE POLICE

WHY DOES THIS MATTER?

Problem-solving is one of the best-evidenced policing strategies. It has been shown to reduce crime, anti-social behaviour and demand in a wide range of different contexts when fully implemented. Each stage of the problem-solving process – which is captured by the SARA (scanning, analysis, response, assessment) model – is essential to its success and can be aligned with the established tasking and coordination processes.

HOW WILL WE ACHIEVE THIS?

Our Neighbourhood Policing officers, staff and volunteers will:

- Have a focus on proactive prevention
- Adopt a systematic structure to problem-solving activity, such as SARA, exploring the root causes of problems by analysing multiple sources of information
- Use evidence-based and innovative responses that target the underlying causes of problems and are tailored to local context, while routinely evaluating and assessing the impact of responses undertaken and sharing good practice
- Integrate with other parts of the organisation, and wider partners, to support its delivery, involving communities in each stage of the problem-solving process, enable police and partners to address long-term issues affecting communities, providing reassurance, while also reducing demand on all stakeholders

For further information and support around crime prevention visit:
www.police.uk/cp/crime-prevention/

TARGETING

We will ensure Neighbourhood Policing Team activity is in the right areas to provide greater focus to Community Engagement, Problem Solving, Crime Prevention and Early Intervention.



WHY DOES THIS MATTER?

It is essential that policing activities within neighbourhoods are targeted according to the needs of different communities, while also taking into account threat, risk, harm and vulnerability.

There is strong evidence that the police can reduce demand by targeting the people and places who are most at risk.

Crime, anti-social behaviour and related harms are often highly concentrated. Their distribution could help to identify those communities, groups and individuals with the greatest needs:

PLACES – Crime and calls for service – which vary in their harm levels – are generally higher in city centres and other industrial and commercial locations as well as in areas of high social deprivation. Incidents also tend to cluster in geographic hot spots. These tend to be fairly small ‘micro’ places, like individual addresses and street corners, and can suffer from chronic problems over many years.

VICTIMS –

Some people are more vulnerable to being victims than others.

There is also likely to be a small number of chronic repeat victims because the risk of victimisation increases with every repeat experience. This concentration of risk may be even higher for victims of antisocial behaviour.

OFFENDERS – While most offenders commit only one or two fairly minor offences, estimates suggest 10 per cent of active offenders commit around 50 per cent of all crime.

Your neighbourhood team will gather data* in relation to places, offenders and victims, and share trends with other departments to target problems, and with yourselves to set community priorities.

**No personal data will be shared.*

HELP THOSE IN NEED - WORKING WITH PARTNERS



ANTI-SOCIAL BEHAVIOUR

We will work with councils, housing providers and other agencies through the Safer Lincolnshire Partnership to resolve issues of anti-social behaviour, working with health services and care providers to ensure support is in place, getting us to the root causes of the issue.

We will work with partners to deliver an effective staged approach to enforcement against those committing anti-social behaviour using policing powers wherever necessary including Community Protection Warnings/Notices, Acceptable Behaviour Contracts and Civil Injunctions.

SAFEGUARDING

Our teams play a crucial role in the identification, support and safeguarding of both adults and young people who are at risk of harm. We work closely with support services, and the education sector to identify vulnerable people, and work to prevent or protect against victimisation or harm and respond to the specific needs of the victim. This may range from advice and support, to helping to resolve their situation, to full statutory adult safeguarding interventions.

We will take part in, or request Team Around the Child (TAC) and Team Around the Adult (TAA) meetings to bring together all the different agencies and

professionals that are working with vulnerable people. The purpose of the meeting is to ensure that everyone is working towards the same goals and that relevant information is shared between parties.



SCHOOL ENGAGEMENT

Mini Police

As part of our Neighbourhood Policing engagement Lincolnshire Police offer a Mini Police programme, an initiative that began in Boston, and is now operating right across the county. The programme aims to provide children with a positive experience of policing, develop their skills and confidence, and help them understand social justice and moral responsibility. The mini police also participate in various activities and events in their local areas, such as road safety campaigns, litter picks, and school visits. The programme is linked to the national curriculum for Personal, Social, Health and Economic (PSHE) education.



Stay Safe Partnership

Our Stay Safe Partnership offer a variety of education programmes covering primary, and secondary schools, colleges and additional settings right across the county. Engaging with, on average, 30,000 young people a year. This programme seeks to reduce the risk of becoming a victim of crime, de-escalating the risk of offending behaviour, whilst building positive relationships between the police and the young people of Lincolnshire, as well as nurturing feelings of social responsibility encouraging young people to become active citizens.



VOLUNTEERING

Citizens in Policing

Citizens in Policing aims to help make communities safer by connecting communities to policing and policing to communities through the thousands of people who volunteer their time to support the police service. The citizens in policing programme aims to:

- Provide additional Capacity to support current and future policing priorities, where there is an identified need
- Build Capability by recognising and developing skills, knowledge, training and support
- Build Connectivity strengthening community engagement, participation and partnership working
- Contribute to policing through meaningful and valued volunteering roles that are effectively deployed



Cadets

Complimenting our school engagement programmes, Lincolnshire Police run a police cadet programme, working to a national framework our objectives are:

- To make a difference in local communities, building character, confidence and contribution through youth-led social action
- Actively help divert young people away from negative influences and crime
- Build trust and confidence between young people, their communities and the police
- Enable young people to have a real voice and influence in building a positive, relevant 21st century policing



VIOLENCE AGAINST WOMEN AND GIRLS (VAWG)

The term 'violence against women and girls' (VAWG) covers a range of crimes, with the common theme that they disproportionately affect women and girls. The most recent statistics show that one in five women are victims of sexual assault (or attempted assault) in their lifetime.

In July 2021, the government launched its Tackling Violence Against Women and Girls Strategy. Evidence presented in the strategy suggests that some forms of violence against women and girls are so commonplace that many women and girls don't even think they are worth reporting.



This is the case for experiences like being grabbed, touched and/or threatened by strangers.

The neighbourhood policing plan looks to utilise the additional policing resources to pro-actively target such offences against women and girls. Through detailed data analysis we understand where our officers are best deployed to prevent offences and support those affected by such behaviour. Through visibility and early engagement, we will create a safe environment for women and girls to enjoy day and night.



For more information and to meet your local team visit: <https://www.police.uk>

WORKING IN PARTNERSHIP WITH:



LINCOLNSHIRE POLICE



CALL YOUR LOCAL POLICE  **101** **IN AN EMERGENCY ALWAYS CALL 999**

FOR NON-URGENT INCIDENTS, REPORT ONLINE  www.lincs.police.uk/onlinereporting

KEEP UP TO DATE VIA OUR SOCIAL MEDIA CHANNELS

 Facebook.com/lincspolice

 instagram.com/lincspolice

 [@LincsPolice](https://twitter.com/LincsPolice)

 nextdoor.co.uk

Version 1 (September 2023)



WORKING TOGETHER TO MAKE LINCOLNSHIRE THE SAFEST PLACE TO LIVE, WORK AND VISIT